

Picture

Case 1

230V/120V,350x210x200mm,with GU10,E27 ,E14,MR16 base,2 wire clip,1*Dimmer,
Using new cool power meter,could show:Power, current, voltage, power factor, power consumption per year.



Case 2

230V/120V,650*385*200MM ,with GU10,E27,MR16,600MM tube base,2 wire clip,1*Dimmer,
Using new cool power meter,could show:Power, current, voltage, power factor, power consumption per year.



Case3

230V/120V,650*385*200MM ,with GU10,E27,MR16,600MM tube base,2 wire clip,1*Dimmer,
Using 2 new cool power meter,could show:Power, current, voltage, power factor, power consumption per year.



Case 4

230V/120V,1300*420*200mm ,with GU10,E27,MR16,600mm,900mm,1200MM tube base,2 wire clip,1*Dimmer,
Using 2 new cool power meter,could show:Power, current, voltage, power factor, power consumption per year.



Case5

: L 662 W 411 H255mm,show Bulb light, E14 E26 E27 GU10 G53 MR16 Base



Case 6

230V/120V,1300*420*200mm,with GU10,E27,MR16,600mm,900mm,1200mm tube base,and simple watts meter



Case 7

230V/120V,520*350*155mm,with GU10,E27,E14,MR16,and Watt meter,and dimmer



Case8,Bulb case

Size:51*34*19cm With 3*MR16,3* E27,3*E14,3*GU10 Base,2 wire clip,1*Dimmer,Simple Watts Meter



Case9,Bulb case

Size:51*34*19cm With 3*MR16,3* E27,3*E14,3*GU10 Base,2 wire clip,1*Dimmer,Cool color Watts Meter
Using new cool power meter,could show:Power, current, voltage, power factor, power consumption per year.



Case10,Bulb case

Size:51*34*19cm With 3*MR16,3* E27,3*E14,3*GU10 Base,2 wire clip,1*Dimmer,**New cool color Watts Meter**
Using new cool power meter,could show:Power, current, voltage, power factor, power consumption per year.



Case11,Bulb case

2*E27,2*E14,2*GU10,2*E40,2*G24,2*G9,2*G4 all of them 230V and 2*MR16 12V.

2 wire clip,1*Dimmer,1***New cool color Watts Meter**

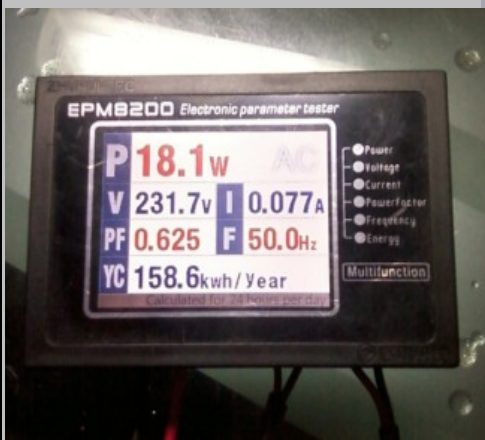
Using new cool power meter,could show:Power, current, voltage, power factor, power consumption per year.



Case12,Bulb case

3x E27, ExE14, 6xgu10, 4xMR16, 2xG9, 4xG4, 2 wire clip, with two T8-wires included.

Using new cool power meter,could show:Power, current, voltage, power factor, power consumption per year.



LED Show board

230V/120V E27 and Watts meter

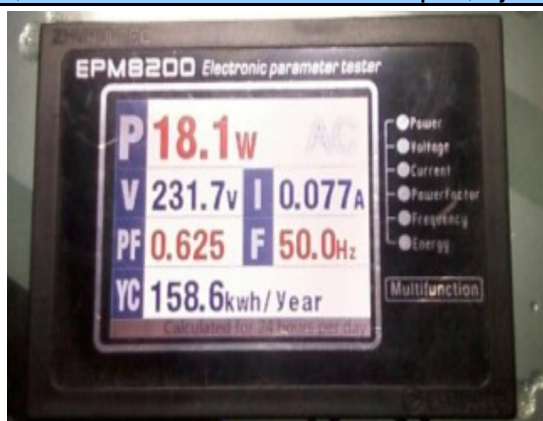


54% ↑ 0
↓ 0

Note: Could choose the silver or black case, and we could also do the case according to your design



1, Cool color watt meter 1 and 2 is more expensive, The function is the same, the difference is color meter 1 show all datas on one screen and color meter 2 show one by one on few screens.
2, the white watt meter is cheaper, it just could show: power, current, voltage.



color watt meter1

color watt meter2

white watt meter

Function

1. LED lamp or traditional lamp can be tested through a lightbox line.
2. Parameters for MR16 can be tested (direct-current power)
3. Parameters for GU10, E14, E26/E27 can be tested (voltage, current, power, power factor, annual current consumption)
4. AC voltage display area: Input voltage can be displayed; support international use; voltage ranges from 86~264V. Overseas voltage can be shown for overseas use.
5. AC current display area: Current can be displayed. The measurement for current is accurate to mA. The accuracy is about 1/1000. the measuring range is 4A.
6. AC power display area: Power can be displayed. Power meter is correct to 1 decimal point. So, it can show the change and contrast of power correctly. The ultimate power is 999.9w. If it surpasses 999.9, it will be showed as HHHHH.
7. Power factor display area: LED power factor can be displayed. (PF is a very important parameter for LED; power factor for traditional lamp is 1)
8. Annual power consumption display area: Annual power consumption can be displayed (ten hours power on per day)
9. Frequency display area: The frequency for relative state grid can be showed. Some frequency abroad is 60Hz.
10. DC power meter: The power of the DC12V lamp can be showed. AC and DC must be designed separately and should never be showed in the same meter.
11. Design for dimmable: Dimmable engine and Dimmable switch; there are two positions for dimmable switch-DIMMABLE and NON-DIMMABLE. When put the switch on dimmable position, the brightness for all dimmable lamps can be adjusted. When put the switch on Non-dimmable position, all the dimmable lamps can't be adjusted. So it can be tested that if the brightness of the lamp can be adjusted
12. Two wire clamps (AC output and DC 12 output) and one AC output universal socket. It's convenient for external power source. Every lamp socket has a unique switch and mark, which is convenient for identification and control.
13. One storehouse is for small things; 3 foundation plates are to protect the case.

MELODY INT'L GROUP LTD

Tel: +86-750-6180058 Fax: +86-750-6108609

Website: <http://www.melody-lighting.com/>